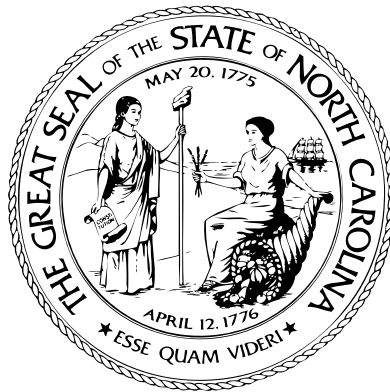


NORTH CAROLINA
ALCOHOLIC BEVERAGE CONTROL

Annual Report

Local ABC Board and
Commission Activities



Control, Service and Revenue Since 1937

NORTH CAROLINA
ALCOHOLIC BEVERAGE CONTROL

2008
ANNUAL
REPORT

LOCAL ABC BOARD AND
COMMISSION ACTIVITIES

Control, Service and Revenue Since 1937

MESSAGE FROM THE COMMISSION CHAIRMAN



North Carolina's Alcohol Beverage Control (ABC) System plays an important role in the State's economy. As you will see in this report, the 158 local ABC boards continued to increase their annual revenue distributions to the state and local governments. Additionally, local boards continued on the course of relocating, modernizing and building new ABC stores to better serve the public.

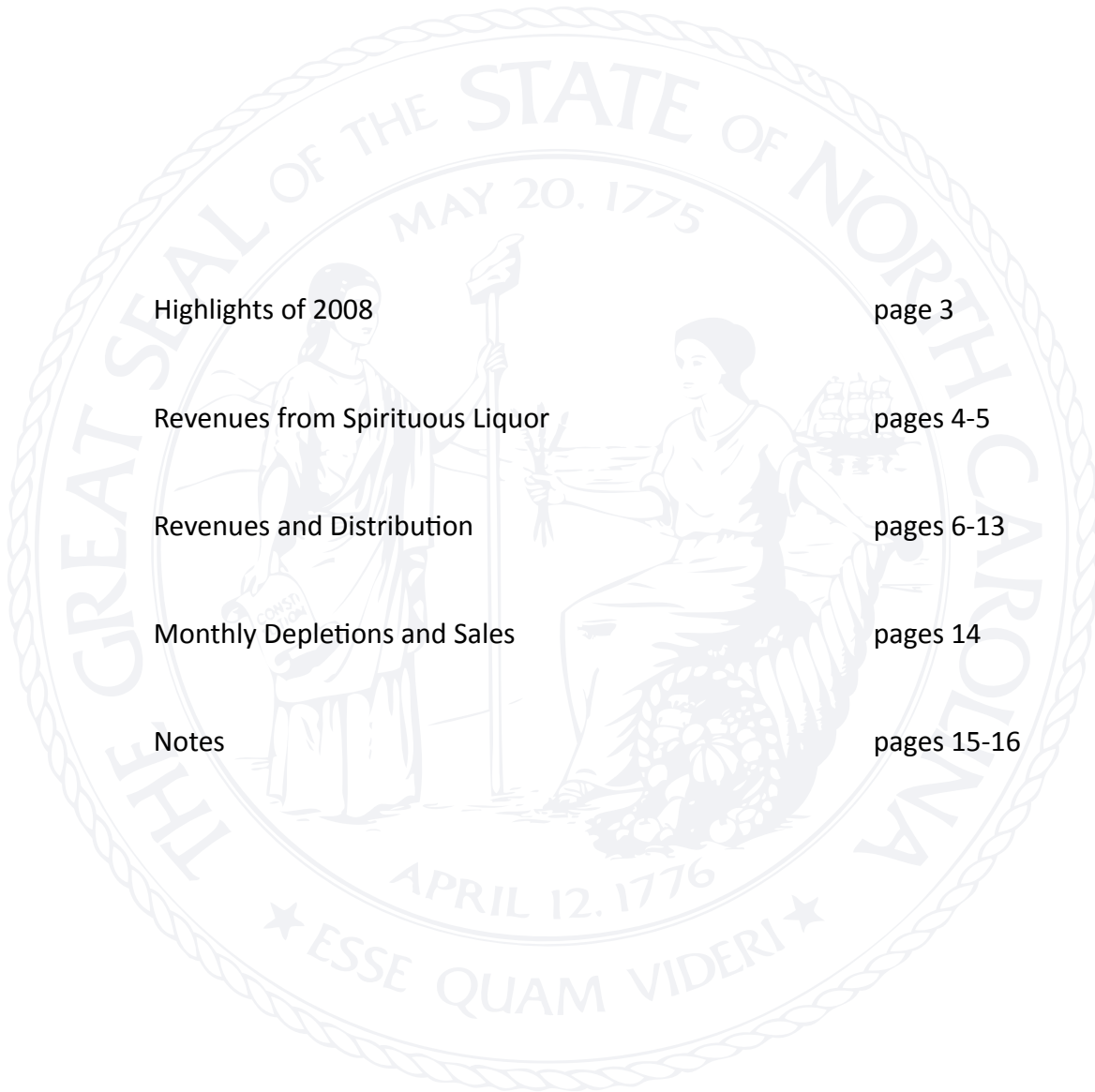
A recent Legislative study revealed that the North Carolina ABC System has fewer retail outlets and lower per capita consumption, yet receives more public revenue per wine gallon in comparison to other states. Based on these findings, it is apparent that the current control system is working well in our state by ensuring moderate consumption along with a superior revenue stream.

A priority again for the ABC Commission this coming year will be to determine the most effective way to expand operations at the ABC Warehouse and Distribution Center to better service industry and the local ABC boards. While LB&B Associates continues to provide outstanding service, projected growth will present extra challenges without more warehouse space.

As I complete my term this year as Chairman of the National Alcohol Beverage Control Association, I would like to express my sincere appreciation and thanks to the entire Commission staff for their dedicated service to the ABC system and the citizens of North Carolina.

Douglas A. Fox

TABLE OF CONTENTS



Highlights of 2008	page 3
Revenues from Spirituous Liquor	pages 4-5
Revenues and Distribution	pages 6-13
Monthly Depletions and Sales	pages 14
Notes	pages 15-16

HIGHLIGHTS OF 2008

- North Carolina ranks 45th in spirits per capita consumption and 7th in revenue per gallon. Based on these numbers, the NC control system ensures moderated consumption and provides a superior revenue stream.
- The General Assembly enacted General Statute 18B-1006.1 requiring all businesses that hold the following permits: on-premises malt beverage, on-premises unfortified wine, on-premise fortified wine, mixed beverage, to separate, store and provide for the collection of all recyclable beverage containers for all beverages sold for consumption on the premises.
- Sales from ABC stores increased 10 out of 12 months over the previous fiscal year, up 6.78% for the year.
- The ABC Commission conducted 1,261 Responsible Alcohol Seller/Server Programs with 6,657 participants. There were 9,127, K-12 and college students who participated in underage drinking prevention programs.
- The ABC Commission issued 8,433 ABC permits compared to last fiscal year's 6,790.
- Four new ABC stores were opened during this fiscal year and many others were remodeled or relocated.
- Aristocrat Vodka 80 Proof was the #1 selling brand with 159,857 cases depleted. The top 5 most profitable brands were Grey Goose .75L, Crown Royal w/bag .75L, Jack Daniels Black Label .75L, Jagermeister .75L and Absolut .75L. Pinnacle Vodka was the fastest growing brand in the state and ranks as the 17th best selling brand in NC.
- Total money collected by the ABC Commission and turned over to the North Carolina general fund was \$14,971,607. Of the total, \$13,413,133 came from permit application and renewal fees and \$1,369,750 came from fines and penalties for ABC violations.
- Douglas A. Fox was elected to a one year term in May 2008 as Chairman of the Board, National Alcohol Beverage Control Association (NABCA). His theme for the year is "Building Bridges".

REVENUES FROM SPIRITUOUS LIQUOR

Revenues From Spirituous Liquor - North Carolina ABC Boards July 1, 2007 - June 30, 2008

	Statutory Authority	06/30/08	06/30/07	Increase -Decrease	Percent Change
Liquor Sales - Regular		543,316,696	508,538,885	34,777,811	6.84%
Mixed Beverage Sales		148,876,669	140,973,393	7,903,276	5.61%
Total Sales		692,193,365	649,512,278	42,681,087	6.57%
State Excise Tax	105-113.80(6); 18B-805(b)(2)	127,780,451	119,690,379	8,090,072	6.76%
Liquor Sales Tax	105-164.4(a); 18B-805(b)(2)	36,949,261	34,828,288	2,120,973	6.09%
Mixed Beverage Tax - Revenue	18B-804(b)(8),(9); 18B-805(b)(2)	13,624,256	13,154,635	469,621	3.57%
Mixed Beverage Tax - DHR	18B-804(b)(8),(9); 18B-805(b)(3)	1,360,727	1,315,337	45,390	3.45%
Rehabilitation Tax	18B-804(b)(6); 18B-805(b)(4)	2,337,308	2,253,490	83,818	3.72%
Cost of Goods Sold	18B-805(b)(1)	369,290,155	346,558,123	22,732,032	6.56%
Operating Expenses	18B-805(b)(1)	105,345,016	96,196,055	9,148,961	9.51%
Interest Income	18B-805(a)	2,739,512	3,285,889	-546,377	-16.63%
Other Income	18B-805(a)	1,486,441	4,342,838	-2,856,397	-65.77%
Profit Before Distribution		76,926,848	78,310,321	-1,383,473	-1.77%
Profit Percent To Sales		11.11%	12.06%		-0.94%
Law Enforcement	18B-805(c)(2)	7,186,569	6,413,801	772,768	12.05%
Alcohol Education	18B-805(c)(3)	8,490,989	8,121,635	369,354	4.55%
Net Profit		61,249,290	63,774,885	-2,525,595	-3.96%
County - City Distributions	18B-805(e)	42,122,594	40,306,023	1,816,571	4.51%
Mixed Beverage Tax Retained	18B-805(b)(2); 18B-805(f)	12,253,815	11,838,780	415,035	3.51%
Surcharge Collected	18B-804(b)(6a); 18B-203(a)(15)	3,664,624	3,433,437	231,187	6.73%
Bailment Collected	18B-804(b)(2); 18B-203(a)(15)	4,878,552	4,443,271	435,281	9.80%
Bottles Sold:					
Regular		37,831,480	36,344,646	1,486,834	4.09%
Mixed Beverage		7,061,270	6,800,435	260,835	3.84%
Total		44,892,750	43,145,081	1,747,669	4.05%
Miniatures		9,125,283	9,555,569	-430,286	-4.50%
Number Of Stores		402	398	4	

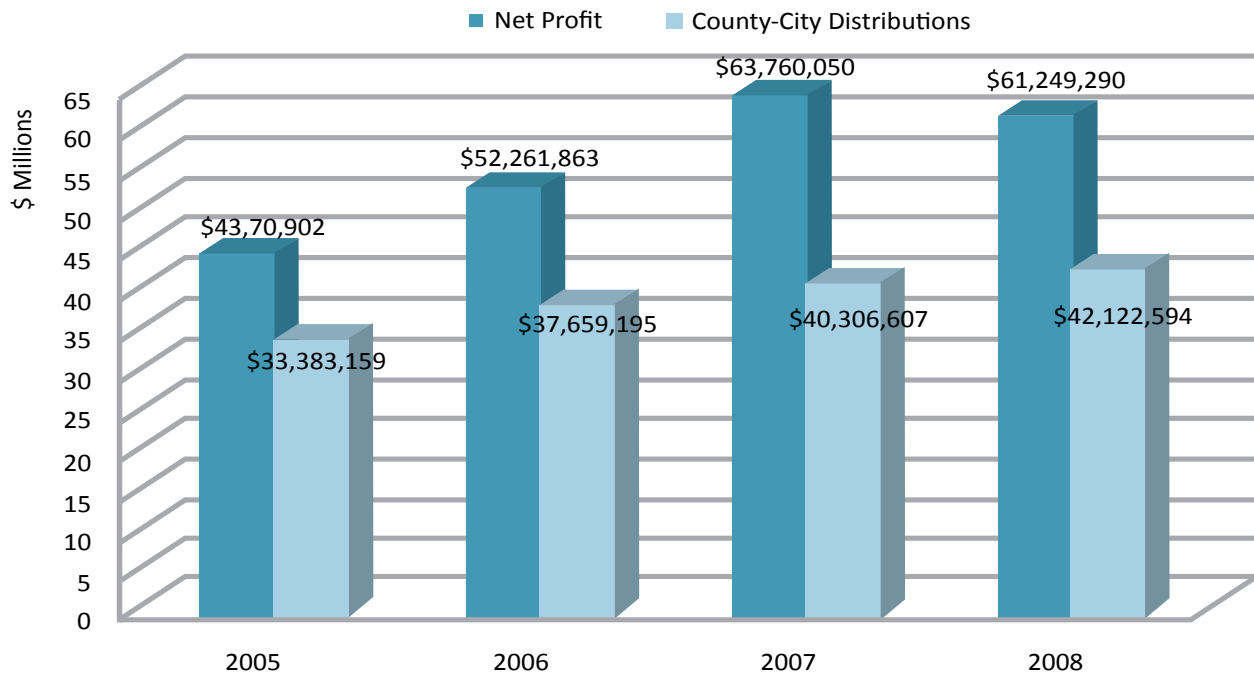
Notes: The sales tax rate changed from 6.75% to 7% April 1, 2008

REVENUES FROM SPIRITUOUS LIQUOR

Profit Percent to Sales



ABC Board Net Profit and Distributions



REVENUES AND DISTRIBUTION

ABC Board	Retail Sales	Mixed Beverage Sales	Wine Sales	State Excise Tax	Mix Bev Tax-Dept Revenue	Mix Bev Tax-DHR	Rehab Tax	Cost of Liquor Sold
Alamance Municipal	6,725,676	1,632,670	0	1,543,145	160,104	16,009	29,660	4,485,467
Albemarle	2,042,388	254,727	11,612	431,997	25,023	2,502	8,202	1,241,971
Andrews	589,526	1,212	5,218	113,451	126	13	2,433	328,812
Angier	892,458	1,908	1,540	171,474	186	19	3,693	494,190
Asheville	13,055,286	6,367,790	52,916	3,516,952	564,844	56,488	60,372	10,196,893
Beaufort County	3,640,084	292,685	12,303	743,469	28,025	2,802	15,461	2,156,393
Belville	1,768,705	0	0	339,410	0	0	6,884	983,314
Bertie County	776,060	0	0	148,715	0	0	3,345	437,625
Bessemer City	532,277	1,443	2,600	101,562	258	26	2,634	295,679
Black Mountain	1,506,421	0	0	289,343	0	0	5,390	832,500
Blowing Rock	900,163	817,077	7,203	301,822	73,474	7,347	4,615	867,829
Boiling Spring Lakes	484,430	1,978	0	93,171	218	22	1,832	269,642
Boone	4,055,487	41,484	25,038	785,455	3,465	347	13,659	2,293,558
Brevard	2,152,218	486,722	23,632	490,427	43,868	4,377	8,085	1,398,284
Brunswick	440,469	0	0	84,061	0	0	2,004	244,249
Brunswick County	1,789,176	376,350	0	401,511	37,831	3,783	7,331	1,157,983
Bryson City	1,414,688	125,556	7,803	291,200	11,815	1,182	5,553	852,233
Bunn	694,540	0	344	133,226	0	0	2,733	387,296
Calabash	1,225,269	284,713	13,027	281,028	29,776	2,978	5,135	809,111
Camden County	1,004,270	0	256	192,274	0	0	3,809	559,354
Canton	987,483	28,047	5,413	193,790	2,874	287	3,996	562,111
Carteret County	8,394,814	2,041,776	54,969	1,930,652	193,565	19,356	32,456	5,572,718
Caswell County	1,695,334	0	0	324,819	0	0	7,614	947,290
Catawba County	11,273,035	2,535,367	41,428	2,558,389	241,034	24,103	47,477	7,425,896
Chatham County	1,982,408	97,266	15,013	397,176	7,298	730	6,606	1,163,200
Cherryville	790,709	38,571	2,320	157,730	3,028	320	3,458	454,434
Chowan County	1,023,674	74,494	4,205	208,026	7,114	627	4,201	606,352
Clinton	1,331,038	107,734	0	271,879	10,027	1,003	6,246	785,590
Columbus	493,924	31,580	4,686	99,433	3,100	310	1,855	288,461
Concord	7,164,793	1,949,147	41,486	1,681,695	187,410	18,741	29,948	4,915,475
Cooleemee	594,617	17,964	5,028	118,255	2,342	234	2,473	332,184
Cramerton	1,107,016	103,641	165	224,489	9,191	919	4,175	692,633
Craven County	5,732,636	1,319,772	29,231	1,305,421	127,305	12,744	24,191	3,768,430
Cumberland County	15,997,338	6,036,640	67,921	4,015,732	563,156	56,317	77,606	11,536,049
Currituck County	3,478,133	361,210	55,295	725,892	33,176	3,317	11,508	2,083,362
Dare County	9,428,863	2,954,617	157,570	2,273,568	286,616	28,661	35,828	6,691,817
Dobson	526,895	0	314	101,104	0	0	2,068	293,116
Dunn	1,801,157	128,569	0	365,607	11,744	1,174	7,712	1,067,633
Durham County	16,693,442	4,438,566	66,018	3,909,045	394,653	39,465	71,629	11,279,137
Eden	1,370,653	181,531	4,629	290,624	18,352	1,835	6,155	843,818
Edgecombe County	3,524,288	57,748	0	684,010	4,957	496	16,798	1,946,137
Elizabethtown	1,045,184	22,744	3,591	203,772	2,537	254	4,355	593,479
Elkin	1,099,299	32,406	6,294	216,005	3,119	312	4,193	632,142
Fairmont	494,232	0	1,005	98,203	0	0	2,566	273,791
Fletcher	1,931,292	108,191	11,569	387,093	10,387	1,039	7,000	1,113,896
Forest City	1,439,222	110,239	8,897	293,199	10,028	1,003	6,426	839,891

NORTH CAROLINA ABC COMMISSION

REVENUES AND DISTRIBUTION

Operating Expenses	Other Exp.	Profit		Law Enf.	Alcohol Edu.	County & Municipal Distrib.	Bottles Sold Regular	Bottles Sold Mix Bev	Bottles Sold Mini	# of Stores
		Before Distrib.	Profit Percent							
1,427,118	-1,310	784,481	9.29%	71,378	0	490,064	489,556	83,886	98,892	4
388,432	0	205,154	8.87%	6,829	9,559	10,000	144,980	13,337	28,579	1
96,528	0	50,984	8.53%	10,000	0	19,921	47,582	47	5,196	1
169,717	0	57,635	6.42%	1,497	0	5,614	69,803	99	19,760	1
3,218,405	93,285	1,770,912	9.12%	192,458	154,523	1,194,545	871,102	298,186	190,809	7
763,875	0	250,424	6.32%	26,181	9,328	205,430	283,071	14,946	56,052	6
281,471	1,687	159,196	8.99%	5,129	0	88,839	128,083	0	41,956	1
211,248	0	-22,080	-2.83%	0	0	0	65,433	0	7,379	2
105,162	0	30,701	5.70%	0	0	43,567	49,831	138	13,539	1
291,177	0	92,197	6.10%	4,628	3,240	60,000	102,402	0	26,987	1
231,147	0	251,349	14.46%	10,272	14,381	260,000	50,040	39,013	16,266	1
97,061	0	24,497	5.04%	454	0	24,043	34,418	116	10,579	1
543,114	14,101	466,902	11.37%	17,289	34,579	411,470	254,164	1,848	85,856	1
398,970	0	301,259	11.31%	11,614	0	275,475	133,710	23,343	23,271	1
83,330	0	28,062	6.35%	9,600	0	7,400	37,884	0	10,986	1
365,283	54,286	141,602	6.69%	3,991	5,587	24,000	121,092	19,707	29,044	2
282,377	0	112,230	7.21%	3,278	4,588	12,134	99,541	6,262	26,283	1
115,142	0	56,465	8.13%	1,754	2,456	46,255	52,480	0	10,774	1
251,002	0	147,031	9.57%	7,031	0	141,514	80,921	15,688	30,425	1
207,032	0	45,144	4.48%	752	1,052	41,173	74,699	0	7,431	2
219,478	14,931	20,921	2.08%	0	0	0	74,533	1,526	19,297	1
1,962,017	9,288	743,630	7.09%	70,460	0	464,547	523,881	101,970	116,381	6
362,951	0	56,771	3.34%	184	258	0	148,100	0	20,909	4
2,268,368	0	1,268,749	9.15%	97,958	89,000	900,000	790,413	126,027	165,485	8
370,840	651	152,092	7.25%	6,093	8,302	0	119,464	3,860	44,017	3
181,616	0	32,773	3.92%	4,800	0	40,000	66,426	415	11,572	1
221,592	17,948	39,714	3.65%	325	456	0	78,491	3,798	8,841	1
210,749	0	167,371	11.52%	6,140	0	122,300	112,258	5,350	36,641	1
107,422	0	26,314	4.96%	545	764	20,000	34,090	1,506	7,538	1
1,648,449	0	807,033	8.69%	30,256	0	270,229	501,129	75,107	113,704	5
111,759	972	53,097	8.56%	4,000	2,418	4,000	48,355	1,245	5,722	1
231,247	0	48,157	3.98%	0	0	5,802	74,018	4,891	22,873	1
1,184,516	0	707,171	9.89%	42,098	0	711,733	401,089	67,519	76,099	6
3,423,867	0	2,661,050	11.89%	299,125	141,487	1,220,946	1,178,501	298,469	375,614	10
656,897	0	604,413	14.57%	24,768	34,675	0	206,070	16,799	36,432	3
1,500,571	0	1,783,933	14.15%	143,004	71,502	1,292,076	550,679	152,555	66,563	5
105,886	0	29,308	5.51%	755	1,056	19,344	38,797	0	12,753	1
312,304	0	171,679	8.86%	8,000	0	150,000	140,066	6,142	40,188	2
3,551,036	22,802	1,924,655	9.07%	265,292	91,403	1,122,222	1,165,289	205,799	307,445	9
283,941	0	111,730	7.16%	3,244	4,542	109,818	109,799	9,802	17,487	1
730,364	256	214,061	5.95%	40,100	20,000	153,961	321,391	2,660	59,556	6
143,989	0	130,227	12.07%	4,867	6,813	105,000	82,120	1,028	20,718	1
200,464	0	95,667	8.30%	3,062	4,286	72,000	79,358	1,633	14,383	1
106,389	0	16,427	3.30%	0	0	0	47,117	0	21,077	1
324,243	31,931	171,440	8.46%	7,980	5,700	54,202	126,760	5,536	38,503	1
250,930	0	153,806	9.84%	9,435	6,739	0	116,812	5,339	31,802	1

REVENUES AND DISTRIBUTION

ABC Board	Retail Sales	Mixed Beverage Sales	Wine Sales	State Excise Tax	Mix Bev Tax-Dept Revenue	Mix Bev Tax-DHR	Rehab Tax	Cost of Liquor Sold
Franklin	2,173,237	188,900	23,649	445,067	21,252	2,125	8,366	1,282,411
Franklinton	598,387	0	1,603	114,797	0	0	2,503	332,692
Garland	240,722	0	0	44,428	0	0	1,223	134,578
Gastonia	5,787,189	1,507,704	29,346	1,345,527	143,266	14,331	26,638	3,898,438
Gates County	481,272	0	0	92,334	0	0	1,860	266,337
Gibsonville	622,698	23,503	1,204	122,938	2,409	241	2,723	356,271
Granite Falls	855,153	33,503	0	169,001	3,881	388	3,496	488,951
Granville County	2,688,866	97,936	0	530,753	9,652	962	11,381	1,537,113
Greene County	601,673	0	61	115,398	0	0	2,473	342,790
Greensboro	23,036,998	8,699,349	74,592	5,791,293	800,207	80,021	104,762	16,653,144
Halifax County	3,753,021	254,216	0	758,958	24,307	2,431	17,269	2,193,690
Hamlet	710,511	11,390	0	137,810	1,279	128	3,226	397,243
Hendersonville	3,910,139	874,431	29,210	888,045	83,639	8,363	15,646	2,569,843
Hertford	673,010	11,120	0	131,036	1,078	108	2,515	372,324
Hertford County	1,662,321	111,168	0	347,001	11,271	1,127	10,063	969,895
High Country	2,169,627	621,484	8,627	515,730	55,069	5,507	7,872	1,502,835
High Point	9,594,161	1,947,377	35,714	2,147,503	181,442	18,144	39,554	6,191,261
Highlands	1,273,087	142,656	15,548	268,602	10,571	1,059	3,511	774,419
Hoke County	757,448	51,877	0	153,290	5,177	518	3,208	443,702
Hyde County	453,900	115,882	0	108,629	19,046	223	1,609	338,413
Johnston County	7,859,948	1,030,359	26,545	1,666,991	98,204	9,822	32,022	4,838,860
Jones County	849,149	0	0	162,744	0	0	3,563	469,221
Kenansville	366,198	21,525	0	73,440	1,997	200	1,667	214,845
Kings Mountain	1,051,096	2,397	3,992	201,599	290	26	4,397	606,996
Lake Lure	485,225	178,437	0	121,284	16,440	1,644	2,070	358,269
Lake Waccamaw	288,530	0	0	55,254	0	0	1,230	160,339
Laurel Park	1,012,940	101,014	8,540	210,750	9,236	924	3,591	604,479
Lenoir City	2,661,192	234,462	11,772	545,363	25,276	2,528	11,802	1,563,657
Lenoir County	2,673,336	269,781	0	555,228	24,238	2,424	11,704	1,605,008
Lexington	2,893,050	224,246	0	589,657	22,230	2,223	12,142	1,702,956
Liberty	715,800	0	0	137,227	0	0	2,960	397,668
Lillington	693,589	62,401	0	142,828	5,817	582	3,026	408,869
Lincoln County	1,488,051	209,599	7,038	318,761	19,471	1,947	5,124	927,310
Lincolnton	1,772,037	250,665	7,065	377,403	24,919	2,492	7,923	1,092,396
Louisburg	1,039,941	53,367	0	207,457	5,531	553	4,530	612,988
Lumberton	2,480,447	442,906	9,985	545,489	39,927	3,993	11,774	1,590,364
Madison	984,978	25,860	0	192,914	2,743	274	4,257	558,785
Maggie Valley	908,186	304,762	10,179	220,869	30,367	3,067	4,179	661,724
Marion	1,814,394	177,114	8,239	374,948	18,638	1,865	7,478	1,089,818
Martin County	1,488,098	49,619	0	292,791	4,776	478	6,479	849,363
Maxton	384,432	0	0	73,598	0	0	1,882	212,879
Mecklenburg County	58,995,211	35,432,794	353,809	16,992,896	3,059,750	305,975	278,364	49,103,844
Monroe	4,166,920	804,215	0	923,472	78,099	7,810	17,394	2,672,135
Montgomery Municipal	1,292,984	54,897	0	256,522	4,830	483	5,840	733,966
Moore County	5,718,833	2,174,884	45,343	1,446,072	186,294	18,630	24,395	4,171,047
Mooresville	6,034,844	1,290,740	38,864	1,362,934	118,138	11,814	21,962	3,968,716

NORTH CAROLINA ABC COMMISSION

REVENUES AND DISTRIBUTION

Operating Expenses	Other Exp.	Profit		Law Enf.	Alcohol Edu.	County & Municipal Distrib.	Bottles Sold Regular	Bottles Sold Mix Bev	Bottles Sold Mini	# of Stores
		Before Distrib.	Profit Percent							
498,014	20	115,386	4.83%	3,132	2,237	52,235	153,472	9,985	19,419	1
133,467	0	16,463	2.74%	0	0	12,263	46,845	0	16,077	1
58,239	0	2,261	0.94%	0	0	0	21,026	0	17,139	1
1,265,782	966	695,068	9.38%	26,305	0	532,000	430,104	74,579	140,408	5
113,606	0	10,355	2.14%	0	0	2,000	36,281	0	4,608	2
151,517	520	14,299	2.20%	0	0	0	50,404	1,049	15,048	1
185,039	0	40,311	4.52%	1,306	1,175	31,923	65,225	2,072	13,134	1
391,687	0	324,154	11.55%	11,897	0	234,193	214,135	4,964	42,638	2
130,196	0	15,216	2.51%	0	0	3,043	46,020	0	17,190	2
4,590,012	0	3,806,456	11.94%	216,237	167,291	2,922,928	1,606,025	420,707	342,505	13
779,164	0	247,883	6.16%	20,249	0	151,178	327,089	12,947	26,646	5
140,748	0	42,833	5.92%	1,219	0	41,614	61,379	708	11,885	1
824,175	0	432,472	8.93%	40,000	29,755	320,000	257,583	43,900	57,179	2
133,959	0	44,419	6.48%	2,356	1,178	40,885	47,978	575	8,691	1
366,953	0	74,718	4.20%	0	0	37,502	137,303	5,618	19,249	3
376,087	0	356,718	12.65%	13,920	19,488	240,000	124,100	28,542	24,039	1
1,873,129	60,849	1,077,719	9.33%	53,464	40,000	733,952	666,016	93,707	156,832	6
224,123	0	145,977	10.14%	5,243	7,340	5,335	62,676	5,611	9,666	1
122,105	0	81,602	10.08%	7,807	5,465	68,330	61,105	2,754	16,286	1
119,796	0	-17,907	-3.14%	0	0	0	42,760	0	30,100	2
1,379,759	0	927,053	10.33%	33,083	14,000	900,000	561,594	52,104	133,759	7
225,501	0	-11,516	-1.36%	0	0	0	68,006	0	16,252	3
104,398	0	-4,465	-1.14%	0	0	8,600	30,133	1,062	10,725	1
216,706	0	30,412	2.87%	4,562	4,562	14,616	83,672	122	20,749	1
140,046	0	29,108	4.35%	503	704	27,028	31,217	8,748	7,136	1
67,235	0	8,336	2.85%	0	0	0	22,660	0	9,651	1
221,661	0	70,815	6.28%	3,769	2,638	57,967	63,268	4,873	18,407	1
464,179	0	292,262	10.03%	10,112	10,112	197,204	212,757	13,273	50,013	2
551,937	0	204,431	6.92%	17,249	0	187,182	204,277	16,609	66,002	3
529,715	0	268,277	8.58%	8,679	0	259,000	224,528	11,230	35,331	2
151,690	0	27,819	3.88%	5,000	467	22,352	56,074	0	15,666	1
122,921	5,119	68,410	9.09%	2,269	4,538	0	55,350	3,096	10,353	1
260,274	0	173,081	10.14%	5,590	7,826	0	88,020	10,377	20,472	1
309,457	0	219,888	10.78%	20,000	11,128	188,760	139,067	13,127	31,343	1
179,794	0	84,348	7.70%	8,385	3,913	64,050	84,244	2,811	17,727	1
549,718	6,041	181,806	6.21%	4,628	0	0	202,929	20,777	58,817	2
207,660	0	48,647	4.79%	870	174	31,243	81,788	649	13,474	1
230,442	10,846	74,083	6.05%	1,946	0	0	61,017	16,182	31,895	1
274,902	0	239,685	11.94%	8,986	12,580	218,119	135,108	9,789	23,315	1
318,177	5,252	61,620	4.02%	982	0	25,000	122,688	2,547	21,781	2
100,862	0	-4,663	-1.21%	0	0	0	34,923	0	13,575	1
12,594,454	0	12,915,052	13.52%	1,668,147	2,900,894	4,697,369	3,789,869	1,588,653	943,802	23
641,762	15,343	633,164	12.73%	50,323	35,227	424,000	295,785	41,436	53,319	1
339,181	0	10,424	0.77%	500	0	4,500	108,603	2,576	28,070	2
1,003,291	0	1,328,545	16.18%	155,520	63,000	728,249	372,176	97,885	89,108	4
1,001,008	32,616	877,990	11.92%	33,257	0	580,000	361,927	62,040	76,390	3

REVENUES AND DISTRIBUTION

ABC Board	Retail Sales	Mixed Beverage Sales	Wine Sales	State Excise Tax	Mix Bev Tax-Dept Revenue	Mix Bev Tax-DHR	Rehab Tax	Cost of Liquor Sold
Morganton	2,731,811	336,973	12,143	576,564	32,528	3,253	11,367	1,680,042
Mount Airy	1,898,625	276,153	8,776	408,198	26,066	2,607	8,316	1,170,470
Mount Holly	1,421,500	0	5,046	272,795	0	0	5,733	793,702
Mount Pleasant	519,626	0	0	99,691	0	0	2,025	288,115
Murphy	3,005,576	57,300	31,630	585,923	5,687	569	10,389	1,697,199
Nash County	6,849,526	965,484	18,005	1,464,388	90,796	9,080	30,670	4,195,316
New Hanover County	20,025,599	10,520,639	0	5,491,964	993,661	99,366	90,248	15,799,084
Newton Grove	360,671	0	0	69,098	0	0	1,651	199,388
North Wilkesboro	978,235	78,976	4,191	200,632	7,072	707	4,305	576,199
Northampton County	1,019,183	0	0	195,127	0	0	4,839	571,631
Norwood	423,685	4,442	0	81,920	403	40	1,700	234,546
Oak Island	1,436,106	344,160	0	329,168	33,538	3,354	5,747	951,744
Ocean Isle	1,113,937	315,384	20,433	262,784	30,262	3,026	4,239	767,592
Onslow County	7,944,477	3,409,127	43,106	2,063,821	307,439	30,744	37,089	5,961,761
Orange County	9,552,192	3,505,910	40,664	2,379,019	342,271	34,227	41,170	6,873,723
Pamlico County	1,022,360	86,322	5,118	209,473	8,775	878	3,971	607,961
Pasquotank County	2,081,512	512,915	0	479,127	49,659	4,966	9,351	1,381,174
Pembroke	569,985	0	0	109,683	0	0	2,629	315,415
Pender County	4,164,520	302,465	0	846,464	29,122	2,912	16,043	2,436,606
Person County	2,175,294	152,691	0	440,809	17,279	1,728	9,225	1,278,932
Pitt County	9,936,302	3,260,825	31,627	2,409,958	322,823	32,284	46,986	7,029,781
Pittsboro	689,011	0	1,106	132,324	0	0	2,402	382,871
Randleman	2,683,960	75,536	13,970	527,118	6,536	653	10,517	1,520,356
Red Springs	516,298	0	0	98,930	0	0	2,373	285,208
Reidsville	1,738,641	134,267	0	354,112	13,452	1,345	7,552	1,029,354
Rockingham	1,429,704	122,202	0	291,433	12,850	1,285	6,401	835,698
Roseboro	543,060	0	0	104,975	0	0	2,868	304,552
Rowan/Kannapolis	7,682,639	820,554	31,775	1,602,914	82,959	8,296	32,289	4,634,980
Rowland	172,386	0	0	32,820	0	0	1,097	103,309
Rutherfordton	967,555	82,148	7,249	198,583	7,501	750	3,971	574,609
Saint Pauls	834,656	0	1,633	159,737	0	0	3,662	455,003
Sanford	3,524,788	498,410	15,342	753,756	48,477	4,848	14,539	2,183,892
Scotland County	1,476,444	70,524	0	294,135	6,641	664	6,344	847,432
Shalotte	1,262,639	157,121	0	266,739	15,180	1,518	5,028	770,256
Shelby	2,955,243	290,086	10,672	614,345	26,623	2,662	12,566	1,778,659
Siler City	983,683	10,735	4,141	189,961	1,019	102	3,980	549,318
Southport	1,414,547	390,469	11,385	333,214	35,489	3,549	5,418	965,202
Sparta	694,506	44,604	2,692	144,088	3,434	343	2,515	400,182
Statesville	3,498,206	642,664	11,849	771,293	61,861	6,186	14,593	2,229,234
Sunset Beach	906,988	150,462	10,707	197,832	14,233	1,423	3,213	579,499
Sylva	2,078,077	650,362	22,479	502,921	56,046	5,605	8,679	1,451,345
Tabor City	578,614	0	987	110,774	0	0	2,652	326,288
Taylorsville	892,900	6,338	2,751	172,325	557	56	3,489	511,897
Thomasville	2,276,237	159,019	0	461,377	14,567	1,457	9,996	1,348,476
Triad Municipal	24,601,045	5,313,455	121,996	5,556,995	492,792	49,279	103,389	15,942,612
Tryon	313,469	73,519	4,204	71,486	7,384	738	1,324	199,860

NORTH CAROLINA ABC COMMISSION

REVENUES AND DISTRIBUTION

Operating Expenses	Other Exp.	Profit Before Distrib.	Profit Percent	Law Enf.	Alcohol Edu.	County & Municipal Distrib.	Bottles Sold Regular	Bottles Sold Mix Bev	Bottles Sold Mini	# of Stores
345,669	0	436,072	14.13%	21,142	34,352	380,413	203,260	16,091	39,901	1
323,311	101	251,897	11.46%	12,595	0	210,193	148,554	13,783	19,866	1
233,137	19,439	99,665	7.07%	3,314	4,639	0	109,460	0	26,017	1
120,249	0	11,950	2.29%	0	0	0	38,945	0	7,825	1
441,843	0	351,277	11.27%	90,000	0	171,429	199,825	3,027	24,653	1
1,242,860	0	813,008	10.35%	165,473	40,413	382,487	549,111	47,465	84,008	9
3,839,017	0	4,380,748	14.27%	500,000	0	2,903,418	1,229,730	495,089	400,727	7
78,352	0	12,207	3.38%	0	0	5,000	30,940	0	10,400	1
248,374	0	26,015	2.44%	1,400	0	20,000	78,095	3,759	21,253	1
254,787	0	-6,654	-0.65%	3,000	0	0	93,671	0	15,516	4
91,609	0	17,935	4.19%	237	332	0	32,767	215	5,071	1
300,079	899	156,665	8.80%	5,286	0	136,244	94,140	17,623	15,884	1
257,364	4,524	123,698	8.54%	4,130	5,781	120,716	65,394	16,074	16,549	1
1,713,631	0	1,321,267	11.53%	49,762	69,667	746,415	555,460	159,547	133,844	6
2,521,894	0	927,884	7.06%	130,708	101,742	416,344	601,293	180,557	207,686	7
206,554	0	79,535	7.12%	2,312	3,237	63,986	71,927	4,707	13,940	2
364,026	10,154	302,744	11.68%	11,316	0	246,735	156,126	26,461	22,207	1
104,956	26,363	14,106	2.58%	0	0	0	50,372	0	11,063	1
729,714	0	408,229	9.13%	13,684	5,474	365,007	289,274	15,532	80,276	5
296,890	0	287,122	12.31%	28,000	15,112	175,500	169,981	9,210	26,510	2
1,713,494	0	1,769,051	13.27%	215,785	110,908	1,000,000	732,381	169,559	188,854	9
115,023	0	56,973	8.25%	2,222	0	17,778	49,480	0	12,907	1
356,963	0	351,122	12.61%	13,341	0	337,781	200,733	3,238	31,815	1
107,691	0	22,096	4.28%	520	0	8,124	45,595	0	9,325	1
344,757	10,656	114,830	6.16%	25,000	0	64,977	139,375	7,151	22,556	1
398,131	0	6,108	0.39%	0	0	6,108	116,851	6,335	24,096	2
105,912	0	25,703	4.72%	2,000	0	4,000	53,910	0	17,286	1
1,829,675	17,254	317,221	3.72%	106,736	0	25,000	577,274	43,760	123,715	7
41,221	0	-6,061	-3.52%	0	0	0	21,033	0	4,544	1
227,709	0	42,434	4.00%	24,518	0	15,000	70,076	3,999	26,760	1
155,096	0	52,828	6.31%	1,367	0	46,437	67,655	0	27,925	1
719,941	0	336,871	8.27%	73,485	15,147	180,000	253,062	25,607	60,617	2
278,114	0	115,806	7.48%	3,415	4,779	104,119	119,383	3,542	19,808	1
216,562	0	146,677	10.32%	5,250	0	144,751	88,052	7,528	24,866	1
622,211	0	199,557	6.13%	10,098	7,069	162,070	225,494	13,932	59,516	2
199,724	1,015	50,943	5.11%	1,581	2,213	30,572	75,735	412	17,218	1
197,090	0	277,458	15.21%	11,275	0	266,183	86,321	18,835	16,084	1
117,281	0	76,666	10.27%	7,181	0	64,626	46,604	1,827	9,389	1
598,696	35	492,814	11.80%	58,561	25,894	367,524	249,827	32,543	47,499	1
228,661	2,587	33,688	3.16%	139	0	10,818	54,523	6,901	14,213	1
311,110	0	416,499	15.05%	16,870	23,619	220,000	135,136	29,715	43,687	1
108,892	15,745	17,740	3.13%	17,500	0	18,186	50,562	0	12,336	1
163,858	0	50,046	5.55%	2,670	1,566	45,810	66,914	297	12,834	1
475,745	0	144,955	5.90%	3,518	4,926	50,000	183,879	7,548	42,461	2
4,995,979	130,669	2,744,284	9.15%	548,015	0	1,909,563	1,725,507	258,838	417,196	15
92,887	0	14,337	3.66%	0	0	5,706	21,526	3,908	5,213	1

2008 ANNUAL REPORT

REVENUES AND DISTRIBUTION

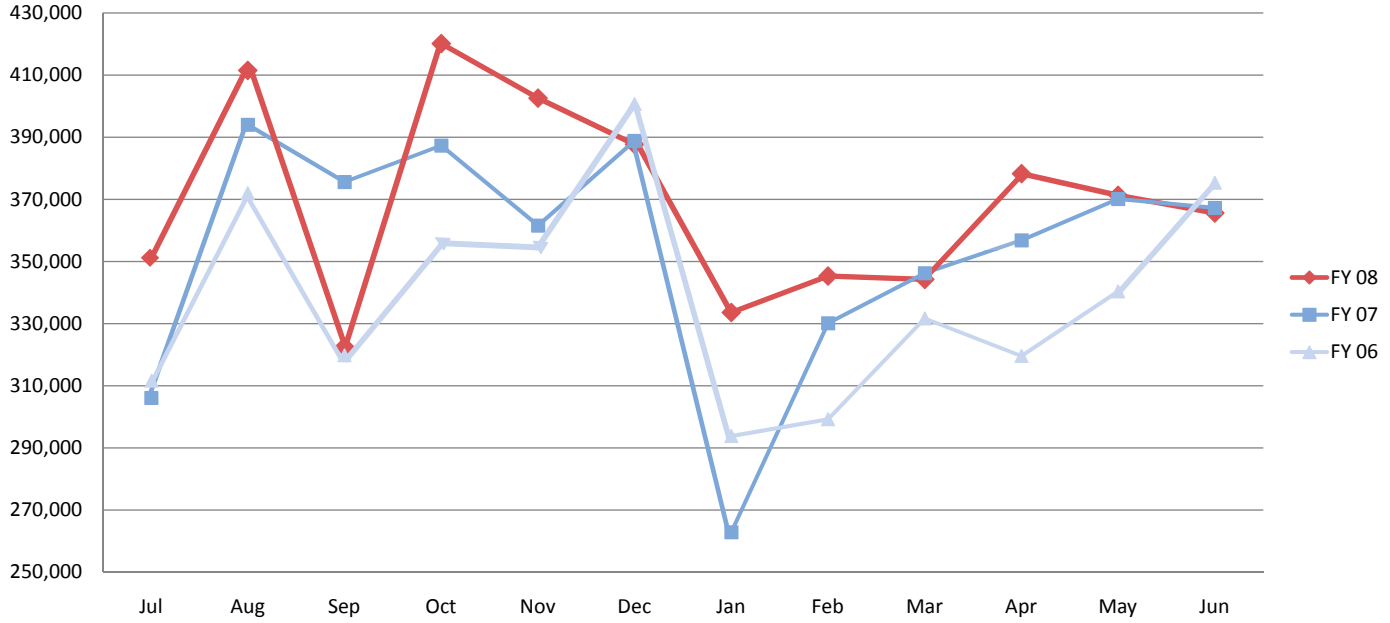
ABC Board	Retail Sales	Mixed Beverage Sales	Wine Sales	State Excise Tax	Mix Bev Tax-Dept Revenue	Mix Bev Tax-DHR	Rehab Tax	Cost of Liquor Sold
Tyrrell County	262,156	0	0	51,621	0	0	1,208	146,111
Vance County	2,715,298	159,173	0	545,395	14,817	1,482	12,315	1,586,589
Wadesboro	1,099,044	20,452	2,467	213,679	2,173	217	4,888	620,130
Wake County	51,187,264	21,454,618	195,300	13,226,724	1,940,284	194,028	214,114	38,063,356
Wallace	1,071,022	62,329	0	214,916	6,183	618	4,618	622,156
Walnut Cove	731,541	0	2,852	140,373	0	0	2,893	409,704
Warren County	1,573,025	48,136	0	307,253	5,588	559	6,572	896,652
Warsaw	457,680	37	0	87,782	2	0	1,893	254,583
Washington County	735,641	6,874	0	142,787	809	89	2,963	409,802
Waxhaw	968,152	0	0	185,593	0	0	3,358	538,369
Wayne County	5,327,178	755,356	11,550	1,139,403	71,179	7,118	23,852	3,293,561
Waynesville	2,195,339	64,271	11,463	431,648	5,937	594	7,919	1,243,844
West Columbus	563,644	0	0	107,637	0	0	2,787	325,452
West Jefferson *	821,019	42,957	4,281	164,161	3,964	396	2,870	475,357
Whiteville	921,878	113,764	0	194,016	11,482	1,148	4,394	569,761
Wilkesboro	1,197,879	149,203	5,308	252,807	14,230	1,423	5,181	732,708
Wilson County	5,260,786	579,177	11,865	1,099,140	55,623	5,562	23,195	3,162,459
Woodfin	2,356,100	45,406	14,159	459,875	4,220	421	8,017	1,321,280
Youngsville	672,133	0	0	128,916	0	0	2,698	373,531
* Opened Nov. 1, 2007	543,316,696	148,876,669	2,256,386	127,780,451	13,624,256	1,360,727	2,337,308	369,290,155

REVENUES AND DISTRIBUTION

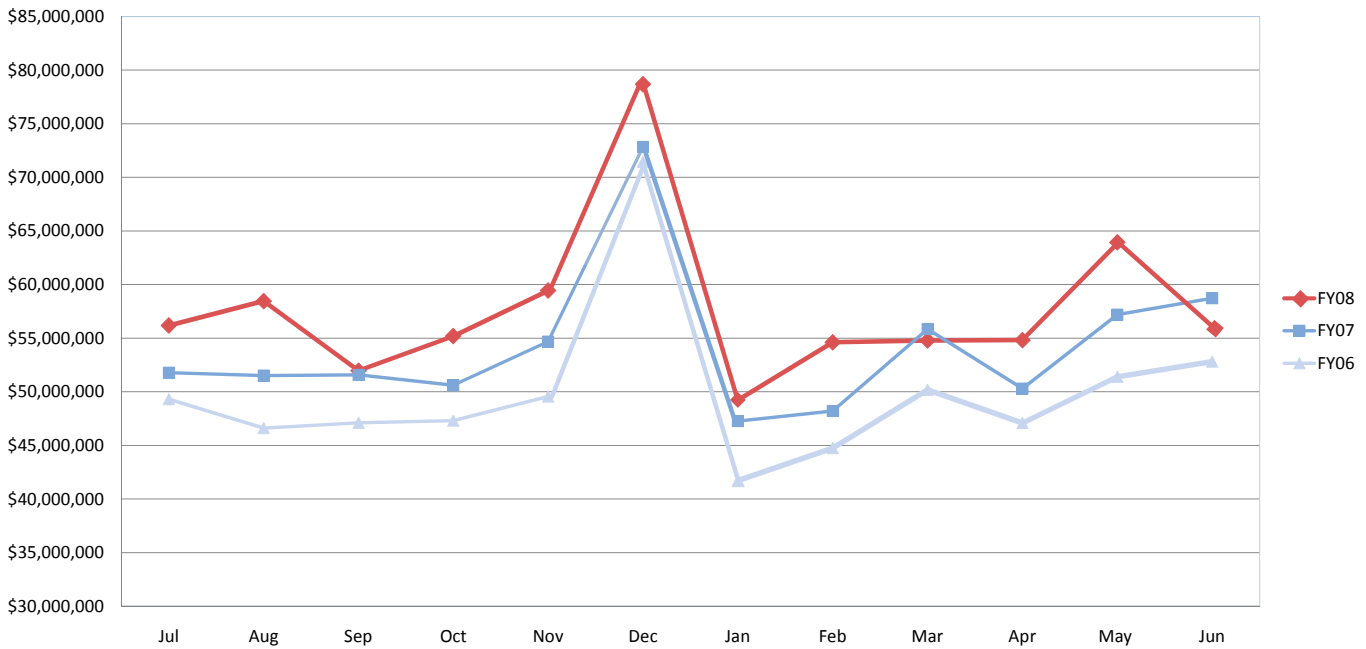
Operating Expenses	Other Exp.	Profit Before Distrib.	Profit Percent	Law Enf.	Alcohol Edu.	County & Municipal Distrib.	Bottles Sold Regular	Bottles Sold Mix Bev	Bottles Sold Mini	# of Stores
49,601	0	13,874	5.29%	282	394	0	22,499	0	3,286	1
434,052	0	293,844	10.17%	49,528	0	244,316	231,880	7,660	33,793	2
211,858	0	75,541	6.68%	8,000	0	60,000	92,441	1,075	21,243	1
6,601,484	0	13,121,633	17.85%	947,272	3,912,020	5,230,833	3,091,328	1,006,875	920,400	20
153,752	0	131,149	11.57%	11,600	0	108,400	85,415	3,296	18,196	1
158,640	0	22,603	3.08%	3,390	0	22,546	55,350	0	12,515	1
328,488	0	79,381	4.89%	1,478	2,069	75,834	126,204	1,220	20,101	3
82,693	0	30,781	6.72%	830	0	0	37,009	1	10,365	1
166,668	0	20,085	2.70%	0	0	0	56,847	477	9,932	1
200,548	0	44,432	4.57%	915	-2,857	2,000	63,714	0	17,338	1
1,084,950	0	508,849	8.30%	15,000	3,700	187,390	423,752	37,652	78,215	6
334,664	0	252,652	11.05%	14,654	9,159	136,188	147,490	3,122	38,850	1
97,114	0	36,430	6.40%	928	0	27,620	53,344	0	11,967	1
104,437	11,418	105,378	12.30%	4,002	5,603	0	54,044	2,060	6,509	1
178,891	1,733	80,283	7.72%	2,407	0	23,022	74,533	5,537	39,016	1
263,240	0	81,717	6.03%	3,500	0	66,500	90,366	7,488	28,840	1
1,051,623	0	479,748	8.15%	18,160	0	200,000	417,411	24,896	107,981	7
399,470	0	210,215	8.70%	6,889	9,645	0	155,758	2,020	22,885	1
142,100	0	24,888	3.70%	207	0	24,681	51,878	0	10,400	1
105,345,016	650,992	76,926,848	11.02%	7,186,569	8,490,989	42,122,594	37,831,480	7,061,270	9,125,283	402

MONTHLY DEPLETIONS AND SALES

ABC Warehouse Monthly Case Shipments



Monthly Sales of Spirituous Liquor



NOTES



NOTES





NORTH CAROLINA ALCOHOLIC BEVERAGE CONTROL COMMISSION

WWW.NCABC.COM



NORTH CAROLINA ALCOHOLIC BEVERAGE CONTROL COMMISSION

3322 GARNER ROAD

RALEIGH, NORTH CAROLINA 27610

TEL: 919-779-0700 • FAX: 919-662-3583

WWW.NCABC.COM